



Automatic Placket Setting Machine



JK-T5878-58G



Jack Wechat



Jack Facebook

JK-T5878-58G

Item: Automatic placket setting machine
 Features: Full automatic, high efficiency

Efficiency Comparison

- Production capacity increases **500%**
- **5 sets** lockstitch machine, space, labour and management cost saving per year
- Quality improvement **10-15%**



Advantages



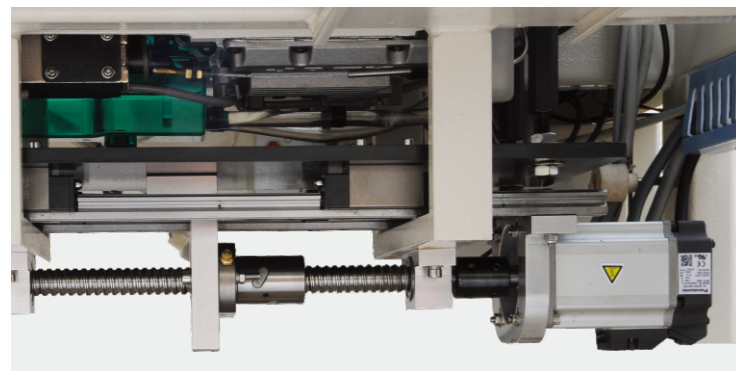
1 Different Patterns, Higher Efficiency

Capable for variety of placket patterns such as neckline placket for both male and female, hidden placket etc., output up to 2400/ 8 hours.



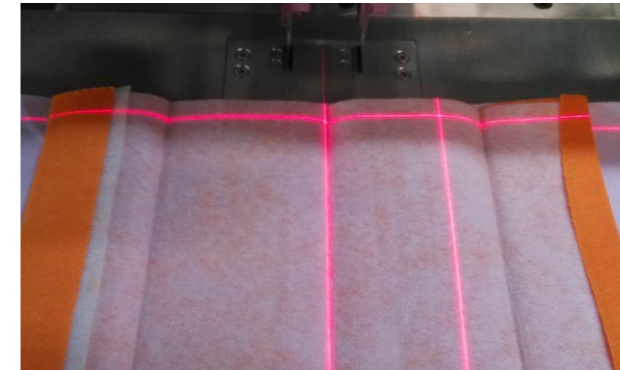
2 Smart Touchable Panel, Intuitive Operation

Large size smart touchable panel with icon image for each parameter makes function set up easy and quickly. USB port for pattern storage and program updates.



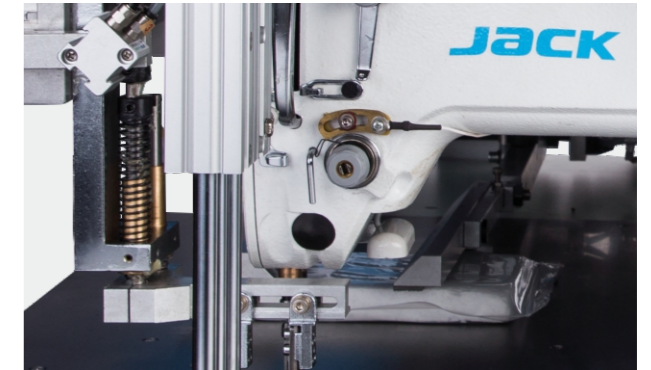
3 Movable Machine Head, Comfortable Operation

Sewing distance can be adjusted freely as per requirement, makes the operation more comfortable.



4 Infrared Positioning, Accurate Operation

Operation table and preparation stations were equipped with cross combination switch laser light positioning device, makes work more convenient and efficient.



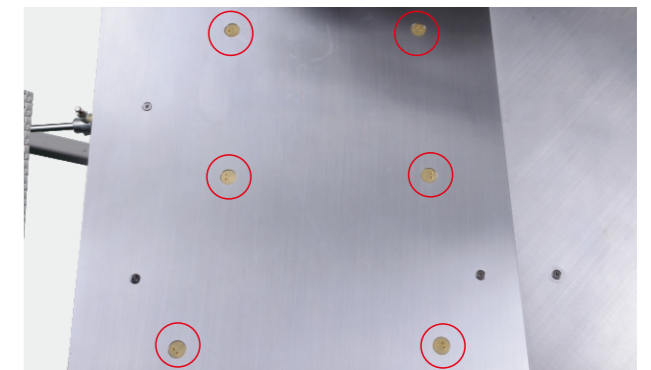
5 Automatically Stop, No Wastage

With the thread breaking sensor, machine will stop immediately in case thread breaking during sewing, do not damage fabric.



6 Automatic Collection Device

Automatic Collection Device for folding clothes makes operation more easy, efficient and secure.



7 Pneumatic Feeding, Beautiful Stitch

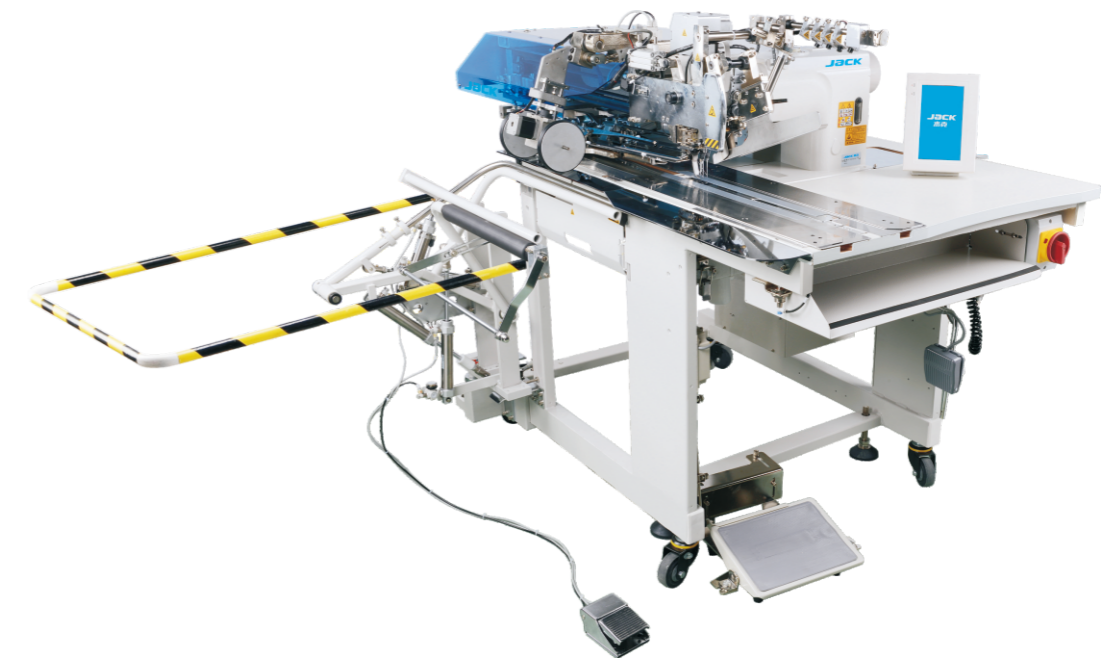
Backstitch feeding by pneumatic, fabrics positioning from 360 degree, to ensure smooth and beautiful sewing.

Specification

Model	Needle	Needle No.	Thread No.	Needle Distance (mm)	Sewing Length (mm)	Max. Speed (s.p.m)	Volume (mm)	Weight (kg)
JK-T5878-58G	DBX1 11-14#	1	2	1-50	15-260	4000	2050×1050×1580	258/350



Automatic Pocket Welting Machine



JK-T5878-68B/78B



Jack Wechat



Jack Facebook

JACK TECHNOLOGY CO.,LTD

ADD:No.1008, Donghai Avenue East, Jiao jiang District, Taizhou City,
Zhejiang Province, China
TEL:0086-576-88177782

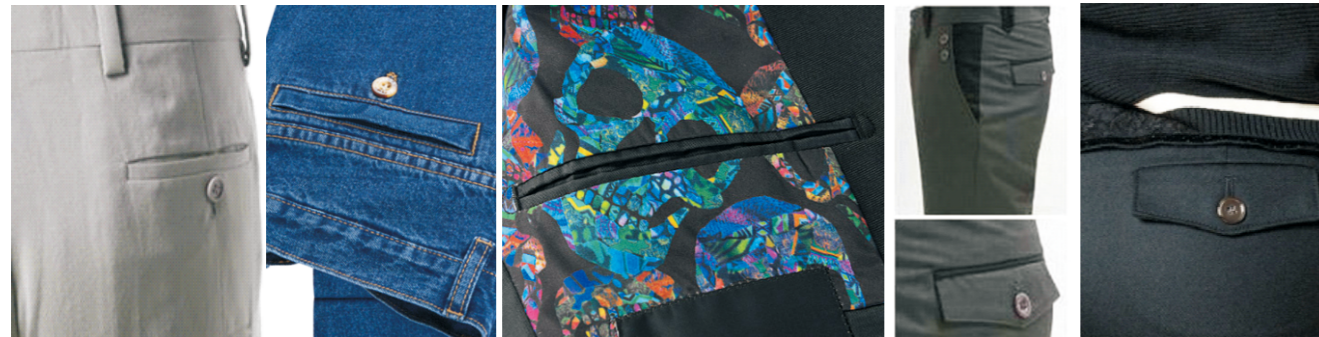
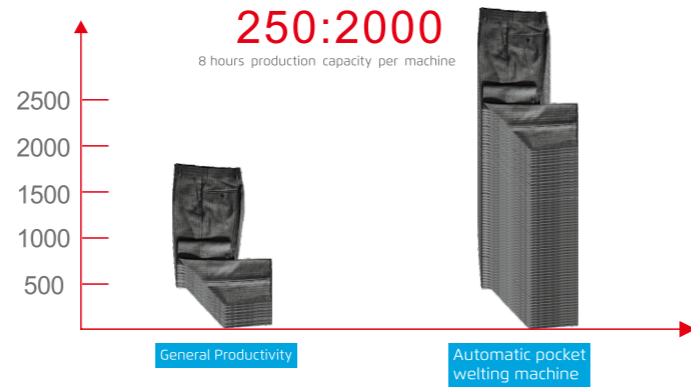
E-mail: sales@chinajack.com
www.chinajack.com

JK-T5878-68B/78B

Item: Automatic Pocket Welting Machine
Characteristic: Full-automatic; Programmable

Efficiency Comparison

- Increase efficiency by 8 times than normal pocket welting machine
- One machine saves 0.4 million RMB for 8 people's salary per year
- Saving 1 million nearly 7 sewing machines
- Production capacity increase **700%**
- **7 sets** lockstitch machine, space, labor and management cost saving per year
- Quality improvement **10-15%**



single welt pocket

double welt pocket

double welt pocket with flap

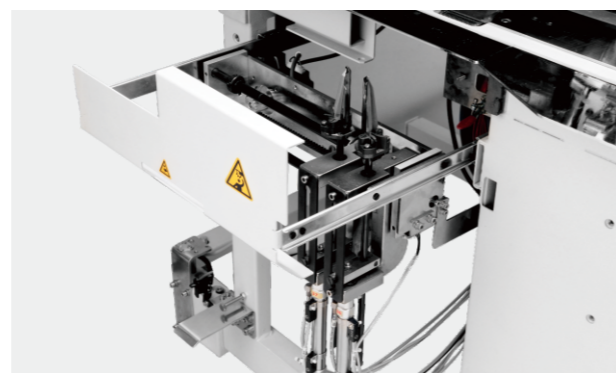
1 Suitable For Different Kinds Of Pocket

Suitable for sewing single welt pocket or double welt pocket, double welt pocket with flap etc.



2 Automatic Collection Device

Automatic Collection Device for folding clothes makes operation more easy, efficient and secure.



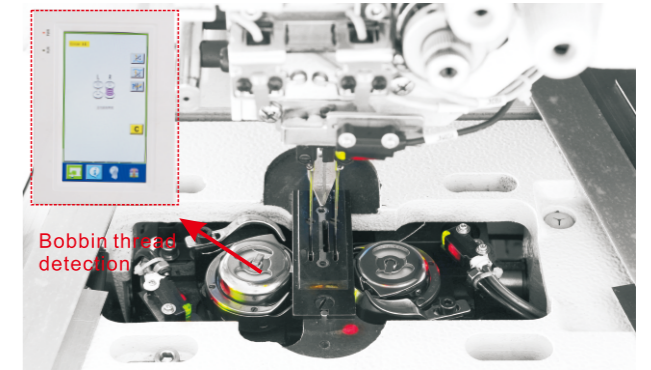
3 Easy Adjustment, Accurate Cutting

Drawer system design corner knife can be adjusted directly once pulled out. It protects fabric and improve cutting accuracy.



4 Smart Touchable Screen, Visual Operation

Super big touchable screen makes operation simple and quick. USB port supports to update program and restore patterns. Inserted SD card can play video.



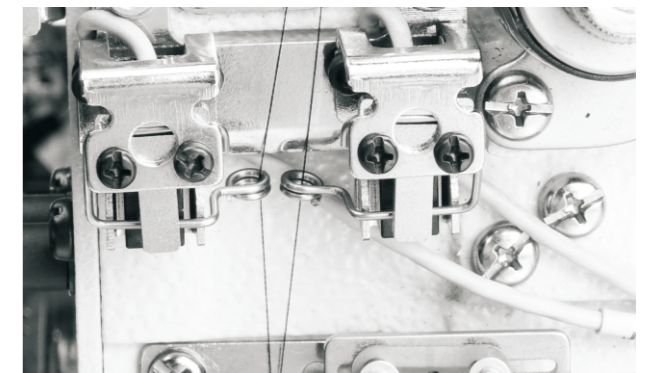
5 Bobbin thread detection

Bobbin thread sensor can monitor the remaining thread amount and alarm operators replace bobbin thread on time. It ensures 100% stitches.



6 Stable Feeding, Avoid Layers Offset

Sandwich feeding type clips fabric in the middle layer, which avoids layers offset.



7 Thread Breakage Emergency Stop

With the thread breakage testing sensor, machine will stop immediately when the thread break during sewing process without damaging fabric.

Specification

Model	Application	Needle	Stitch No.	Thread No.	Needle Gauge (mm)	Pocket Size (mm)	Max. Speed (s.p.m)	Volume (mm)	Weight (kg)
JK-T5878-68B	Straight Pocket	MTx190 14#-18#	2	3	8-20	18-220	3000	1600×1100×1500	240/350
JK-T5878-78B	Slant Pocket	DPx17 14#-18#	2	3	8-20	18-220	3000	1600×1100×1500	240/350